



Determine if the angle shown is 'less', 'more' or 'equal' to 90°.

Answers

Ex)



1)



2)

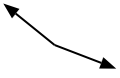


Ex. less

1. _____

2. _____

3)



4)



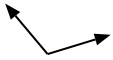
5)



3. _____

4. _____

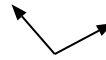
6)



7)



8)



5. _____

6. _____

7. _____

9)



10)



11)

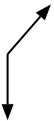


8. _____

9. _____

10. _____

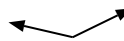
12)



13)



14)



11. _____

12. _____

13. _____

15)



16)



17)



14. _____

15. _____

16. _____

18)



19)



20)



17. _____

18. _____

19. _____

20. _____



Determine if the angle shown is 'less', 'more' or 'equal' to 90°.

Ex)



1)

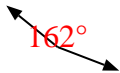


2)



Ex. less

3)



4)



5)



1. less

2. less

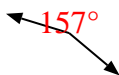
3. more

4. equal

6)



7)



8)



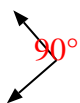
5. less

6. more

7. more

8. more

9)



10)



11)



9. equal

10. less

11. less

12)



13)



14)



12. more

13. equal

14. more

15)



16)



17)



15. equal

16. equal

17. more

18)



19)



20)



18. equal

19. equal

20. less