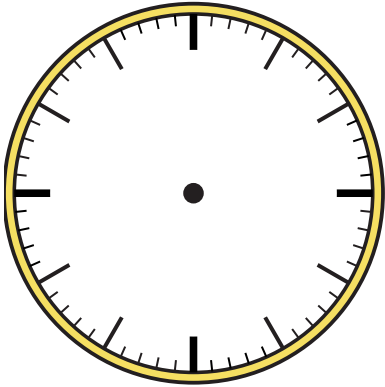


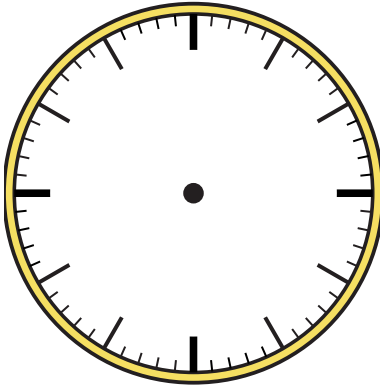


Draw the hour and minute hand on the clock so it represents the time shown.

1) 11:30



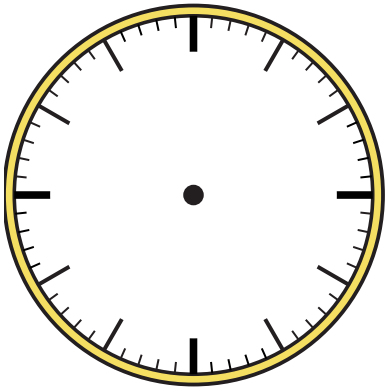
2) 7:45



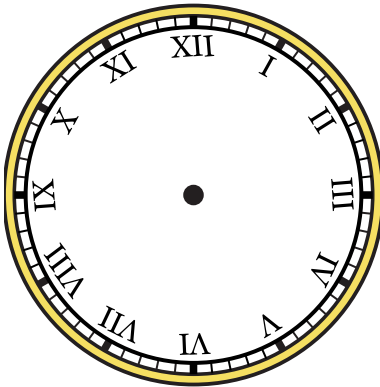
3) 8:00



4) 10:15



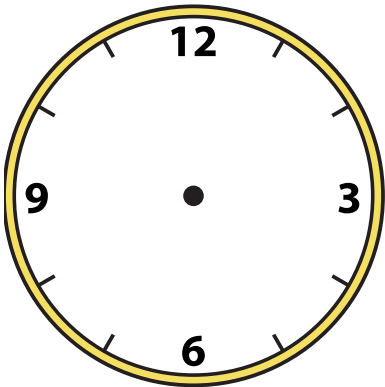
5) 8:45



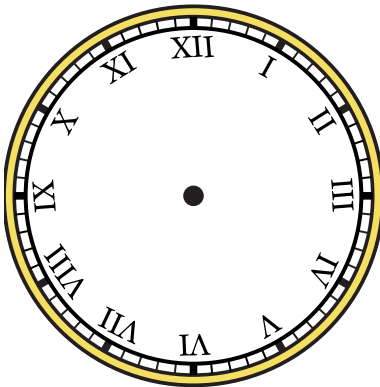
6) 2:00



7) 12:30



8) 12:15



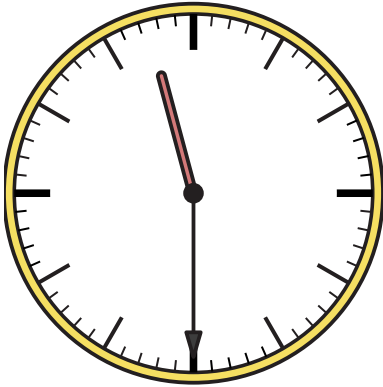
9) 12:00





Draw the hour and minute hand on the clock so it represents the time shown.

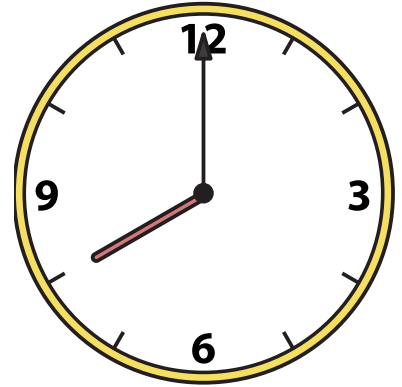
1) 11:30



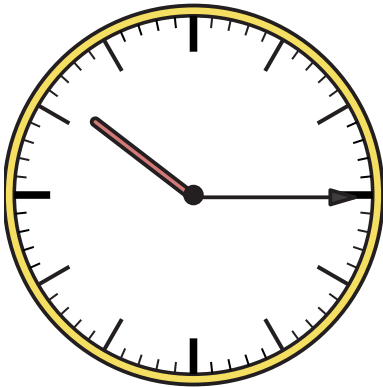
2) 7:45



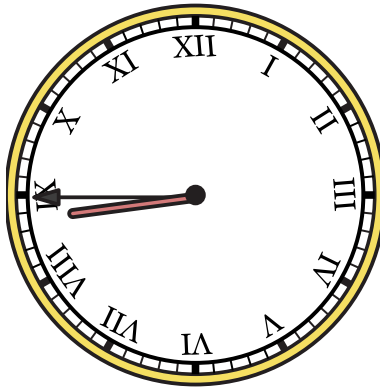
3) 8:00



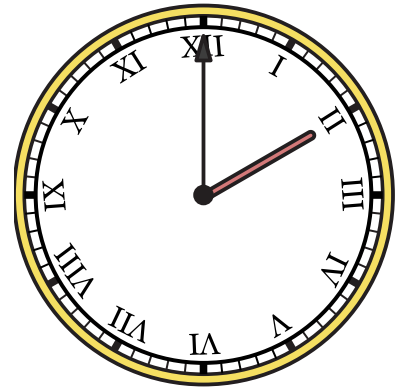
4) 10:15



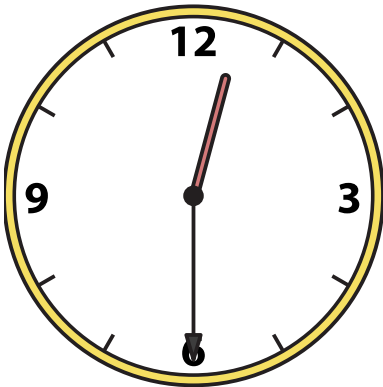
5) 8:45



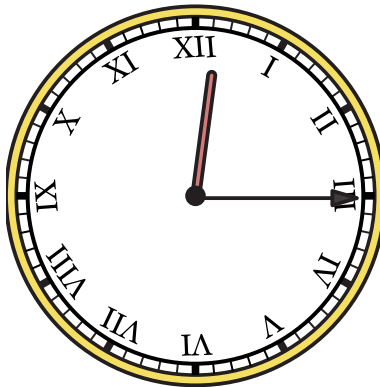
6) 2:00



7) 12:30



8) 12:15



9) 12:00

