



Draw the hour and minute hand on the clock so it represents the time shown.

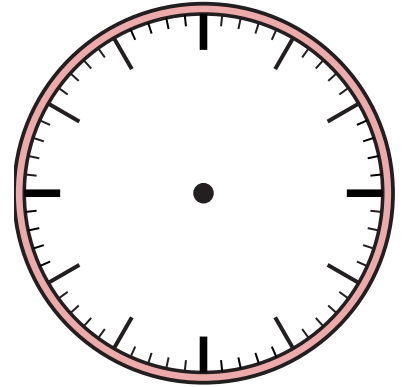
1) 11:05



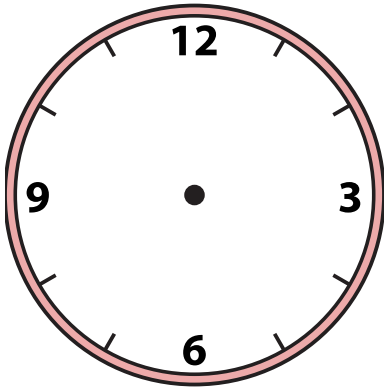
2) 3:34



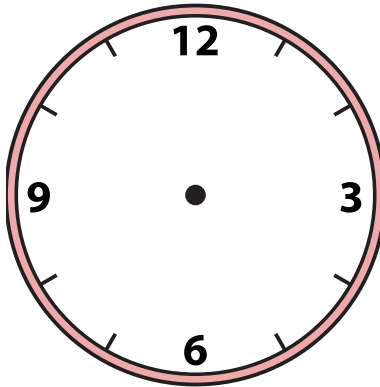
3) 4:03



4) 12:54



5) 7:01



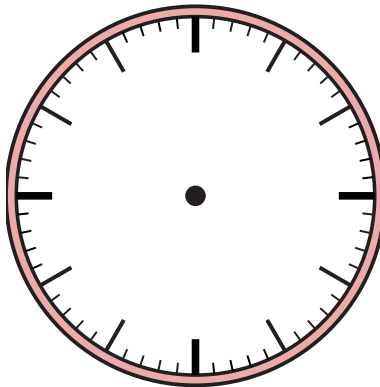
6) 9:03



7) 10:49



8) 5:39



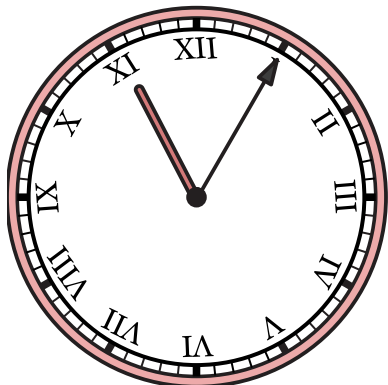
9) 3:31



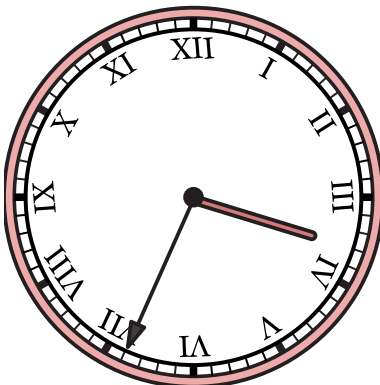


Draw the hour and minute hand on the clock so it represents the time shown.

1) 11:05



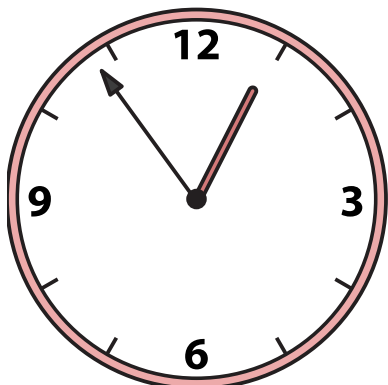
2) 3:34



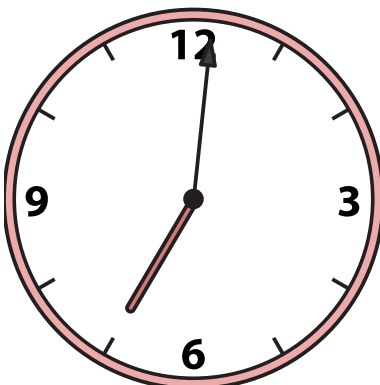
3) 4:03



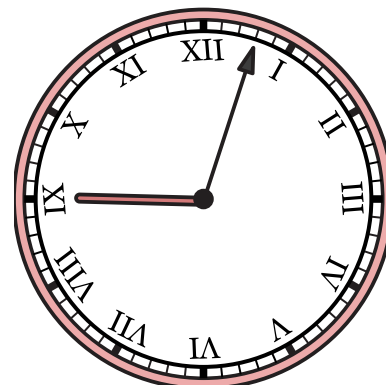
4) 12:54



5) 7:01



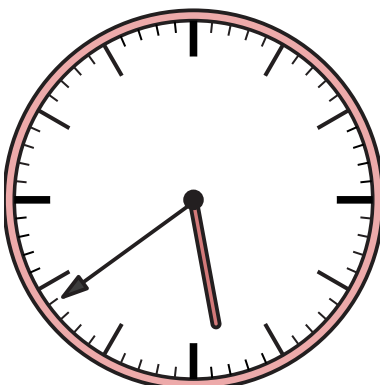
6) 9:03



7) 10:49



8) 5:39



9) 3:31

