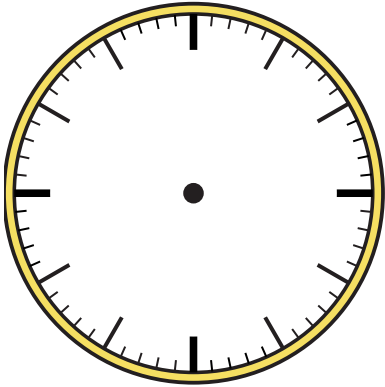




Draw the hour and minute hand on the clock so it represents the time shown.

1) 7:20



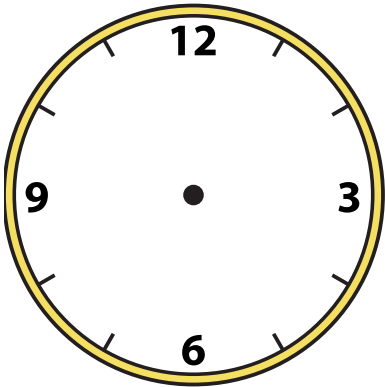
2) 10:35



3) 5:45



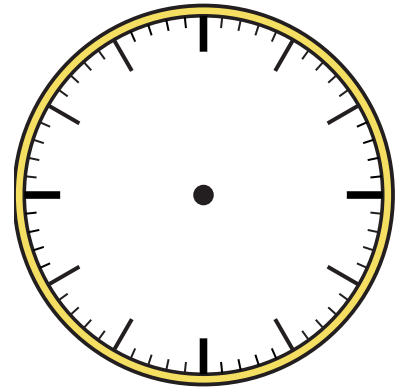
4) 11:00



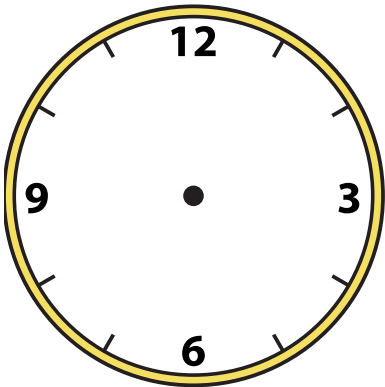
5) 5:15



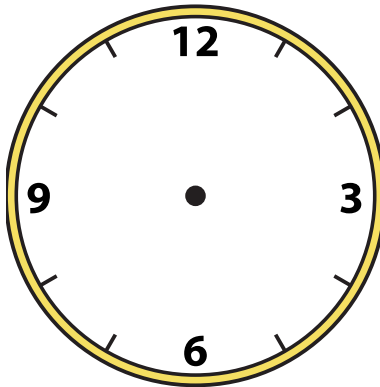
6) 11:30



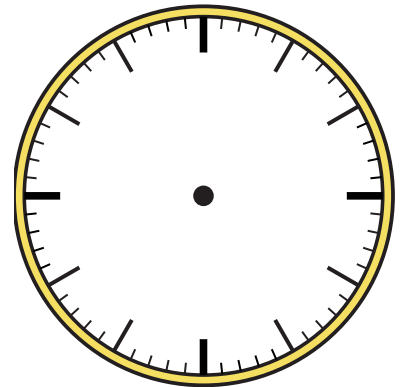
7) 7:55



8) 8:15



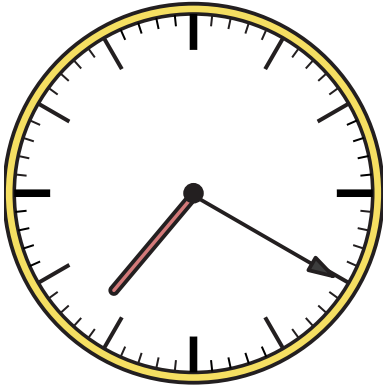
9) 4:00



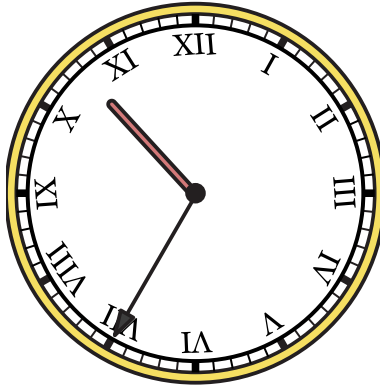


Draw the hour and minute hand on the clock so it represents the time shown.

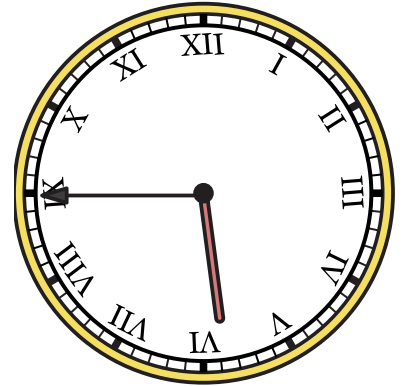
1) 7:20



2) 10:35



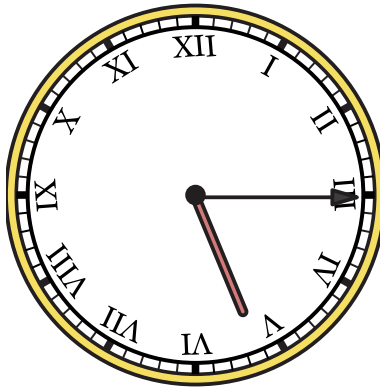
3) 5:45



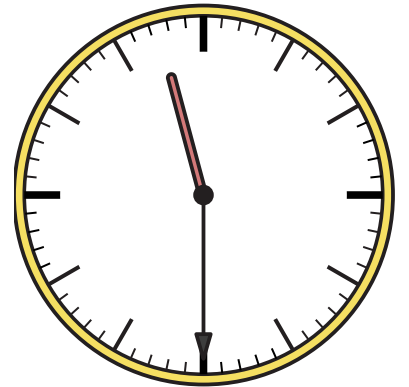
4) 11:00



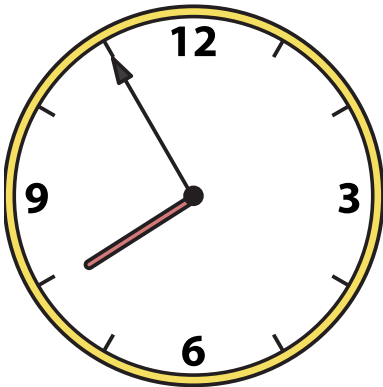
5) 5:15



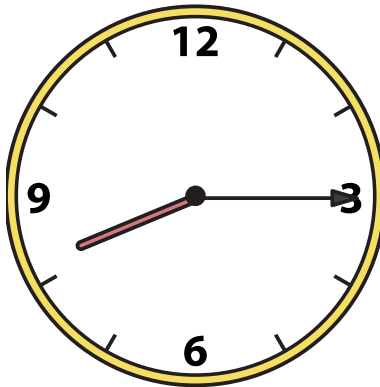
6) 11:30



7) 7:55



8) 8:15



9) 4:00

